

Results of Citizen Input Survey

Please rate each issue in terms of its overall importance to you. The following issues are ranked in order of importance:

1. Quality of Life
2. Fire/Police/EMS
3. Hurricane Evacuation
4. Drainage/Flooding
5. Water/Sewer/Garbage
6. Transportation/Traffic
7. Planned Growth
8. Neighborhood Preservation
9. Appearance
10. Physical Environment
11. Recreation/Open Space
12. Economic Development

Which of the following statements most accurately describes how you would like development to occur in the unincorporated area of Harrison County?

Moderate to slow growth with tighter development restrictions: 68% preferred

Moderate to rapid growth with limited development restrictions: 26% preferred

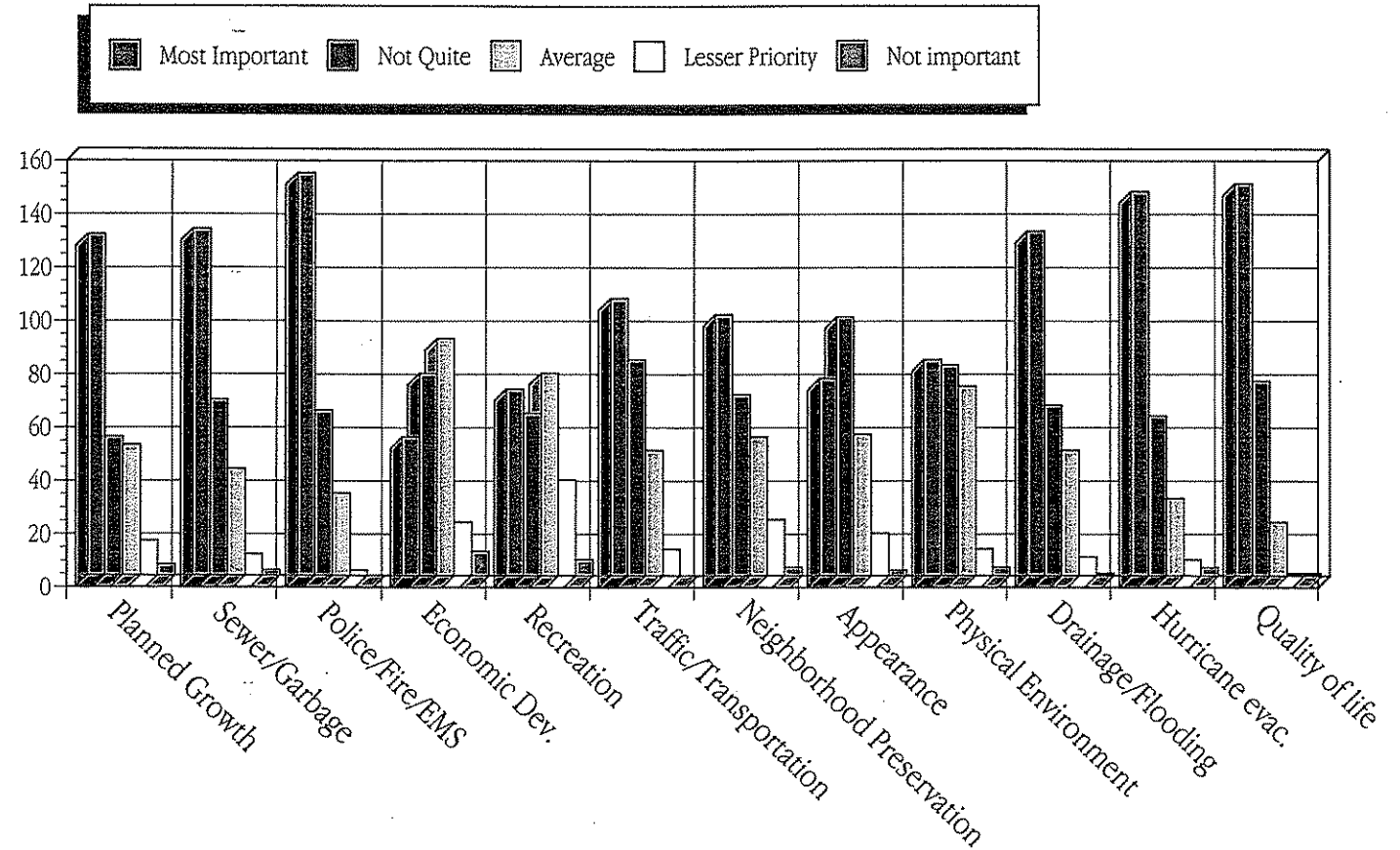
Rapid growth with no restrictions: 4% preferred

No growth: 2% preferred

Existing Land Use Controls in the unincorporated area of Harrison County were ranked as follows:

62% of respondents feel land use controls are **Too Weak**

Importance of Local Issues



21% of respondents feel land use controls are **About Right**

12% of respondents **Didn't Know**

5% of respondents feel land use controls are **Too Strict**

Rate the overall quality of the following services in the unincorporated area of the county. The following services are ranked in order from **Excellent** to **Poor**:

- Emergency Medical Service
- Police Protection
- School System
- Fire Protection
- Solid Waste
- Medical Facilities
- Recreation
- Library
- Cultural Facilities
- Water
- Sewage
- Planning/Development
- Major Thoroughfares
- Street/Sidewalk System

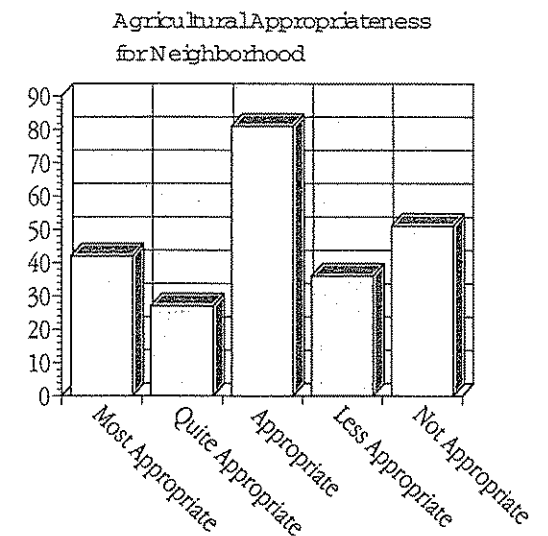
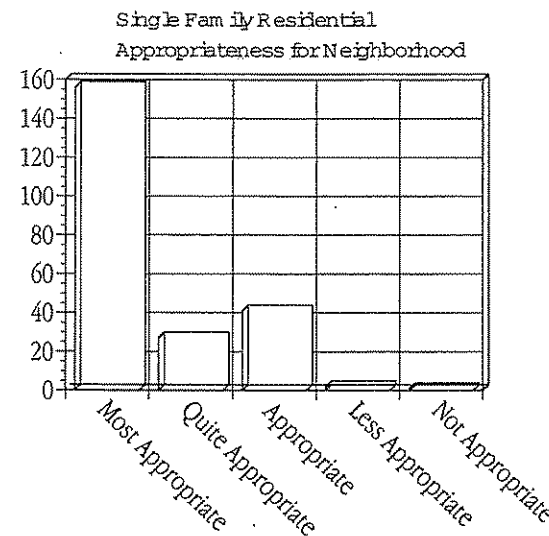
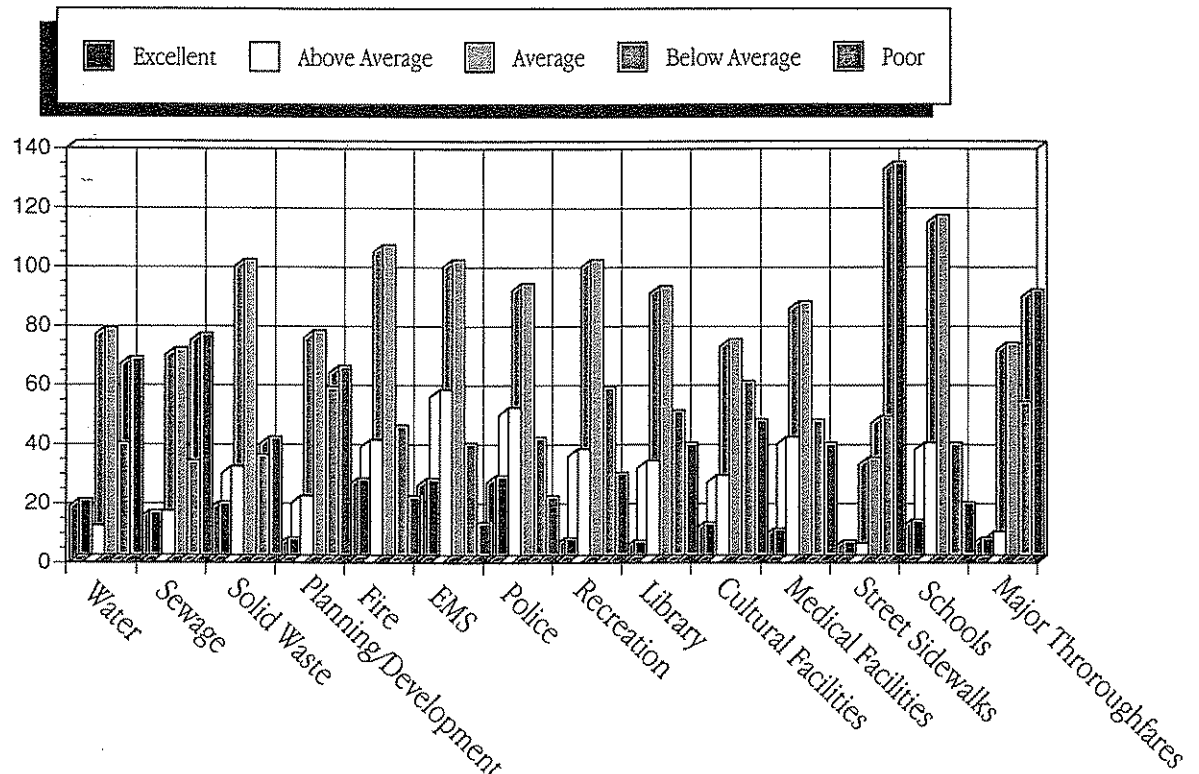
Are there an adequate number of areas with industrial uses in the County?
Responses are as follows:

45% responded **Yes**

20% responded **No**

35% **Didn't Know**

Quality of Services in Harrison County



21% of the respondents feel land use controls are **About Right**

12% of the respondents **Didn't Know**

5% of the respondents feel land use controls are **Too Strict**

Rate the overall quality of the following services in the unincorporated area of the County. The following services are ranked in order from Excellent to Poor:

1. Emergency Medical Service
2. Police Protection
3. School System
4. Fire Protection
5. Solid Waste
6. Medical Facilities
7. Recreation
8. Library
9. Cultural Facilities
10. Water
11. Sewage
12. Planning/Development
13. Major Thoroughfares
14. Street Sidewalk System

Are there an adequate number of areas with industrial uses in the County?
Responses are as follows:

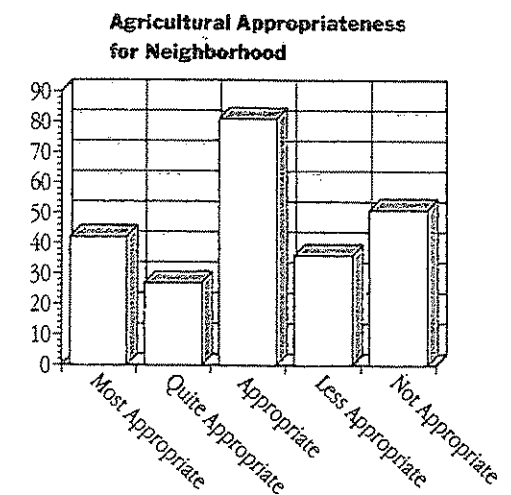
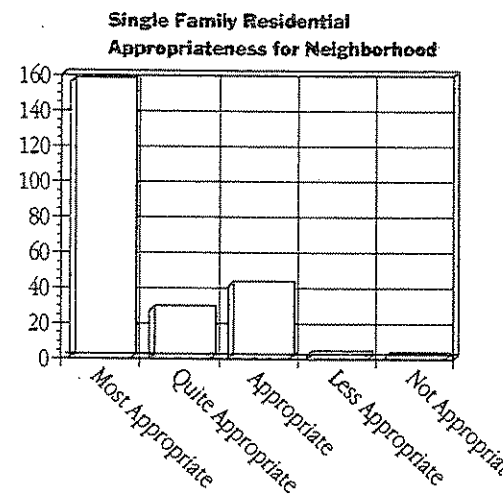
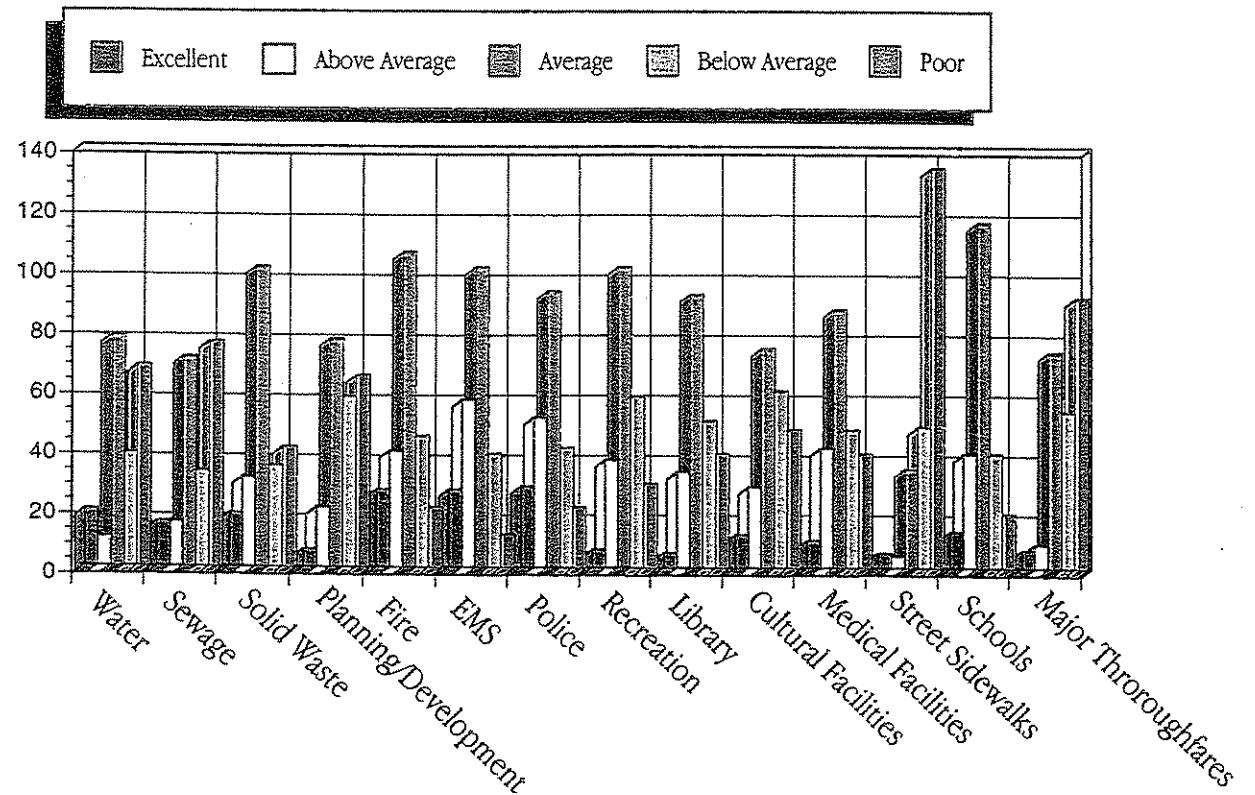
45% responded Yes

20% responded No

35% Didn't Know

What do you think commercial development within the unincorporated part of Harrison County should be: Responses are as follows:

Quality of Services in Harrison County



What do you think commercial development within the unincorporated area of Harrison County should be?

75% of respondents think development should be **Balanced between local and regional markets**

19% of respondents think development should be **Small scale and geared primarily to the local citizens**

6% of respondents think development should be **Large scale and geared primarily to regional markets**

Responses to controls for protecting neighborhoods are as follows:

76% of respondents think controls are **Too Weak**

12% of respondents think controls are **About Right**

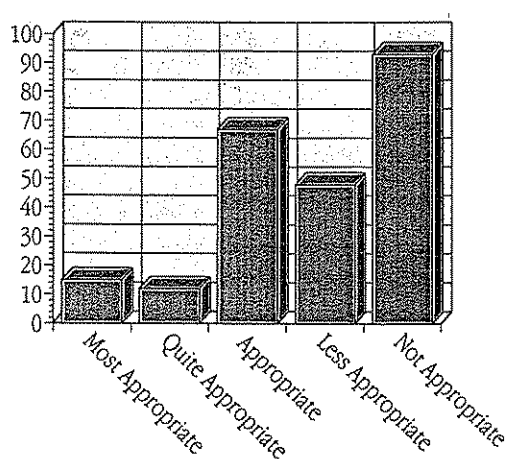
10% of respondents **Didn't Know**

2% of respondents think controls are **Too Strict**

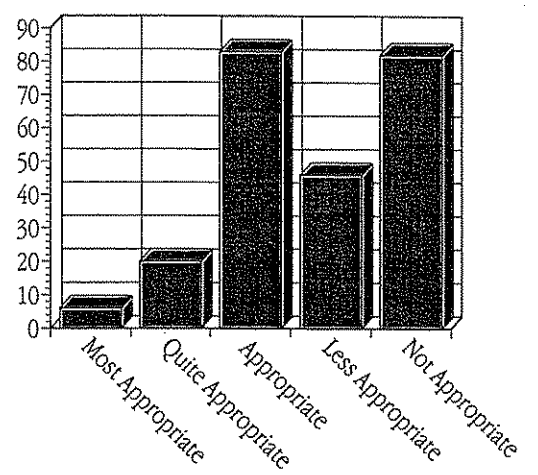
Rate the following uses of land in terms of how they would fit into your neighborhood. The following uses are ranked from Very Appropriate to Not Appropriate:

- Single Family Residential
- Agricultural
- Apartments
- Commercial
- Mobile Homes
- Industrial

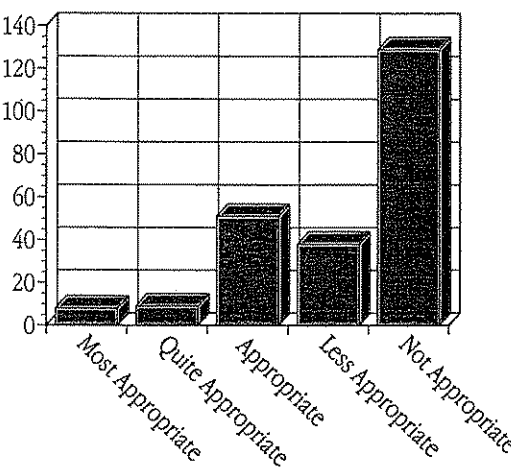
Commercial Appropriateness to Neighborhood



Apartments Appropriateness for Neighborhood



Mobile Homes Appropriateness to Neighborhood



Industrial Appropriateness to Neighborhood

